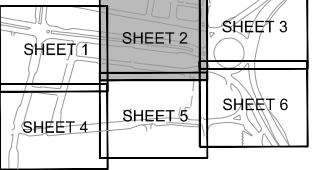


GENERAL NOTES



- Notes:
- All signs and road markings to be in accordance with the Traffic Signs Regulations and General Directions 2002.
  - Double Yellow lines to be 'primrose' colour and 50mm wide.
  - Positioning and locations to be in accordance with the guidance provided in the Department of Transport Traffic Signs Manual.
  - Materials, processes and quality of workmanship employed in the installation of signing and marking to be in accordance with the Specification for Highway Works.

- Key:
- 1020.1 Diagram Ref. No.
  - Loading and unloading of vehicles on a side of a length of road prohibited at any time.
  - New Bollards - NB1PF, NB2KR, NB3PF, NB4PF
  - PF = Plain Faced
  - KR = Keep Right
  - To be SignPost Solution 3sixty or similar approved
  - Proposed railing

Rev	Date	Description	By
E03	08:03:16	AMENDED AS PER COMMENTS	MC
E02	15:01:16	MINOR AMENDMENTS	GH
E01	11:12:15	LAYOUT AMENDED - ISSUED FOR CONSTRUCTION	MC
A06	26:11:15	LAYOUT AMENDED	MC
A05	18:09:15	LEEDS CC COMMENTS ADDRESSED	GH
A04	09:09:15	LEEDS CC COMMENTS ADDRESSED	GH
A03	14:07:15	LEEDS CC COMMENTS ACTIONED / AREAS WITHIN DEVELOPMENT ADDED	SP
A02	02:03:15	EXTENT OF HATCHING ALTERED.	SP
A01	16:10:14	FIRST ISSUE	SP

Project: VICTORIA GATE, LEEDS

Title: TRAFFIC SIGNS, MARKINGS & BARRIERS SHEET 2

Client: HAMMERSON

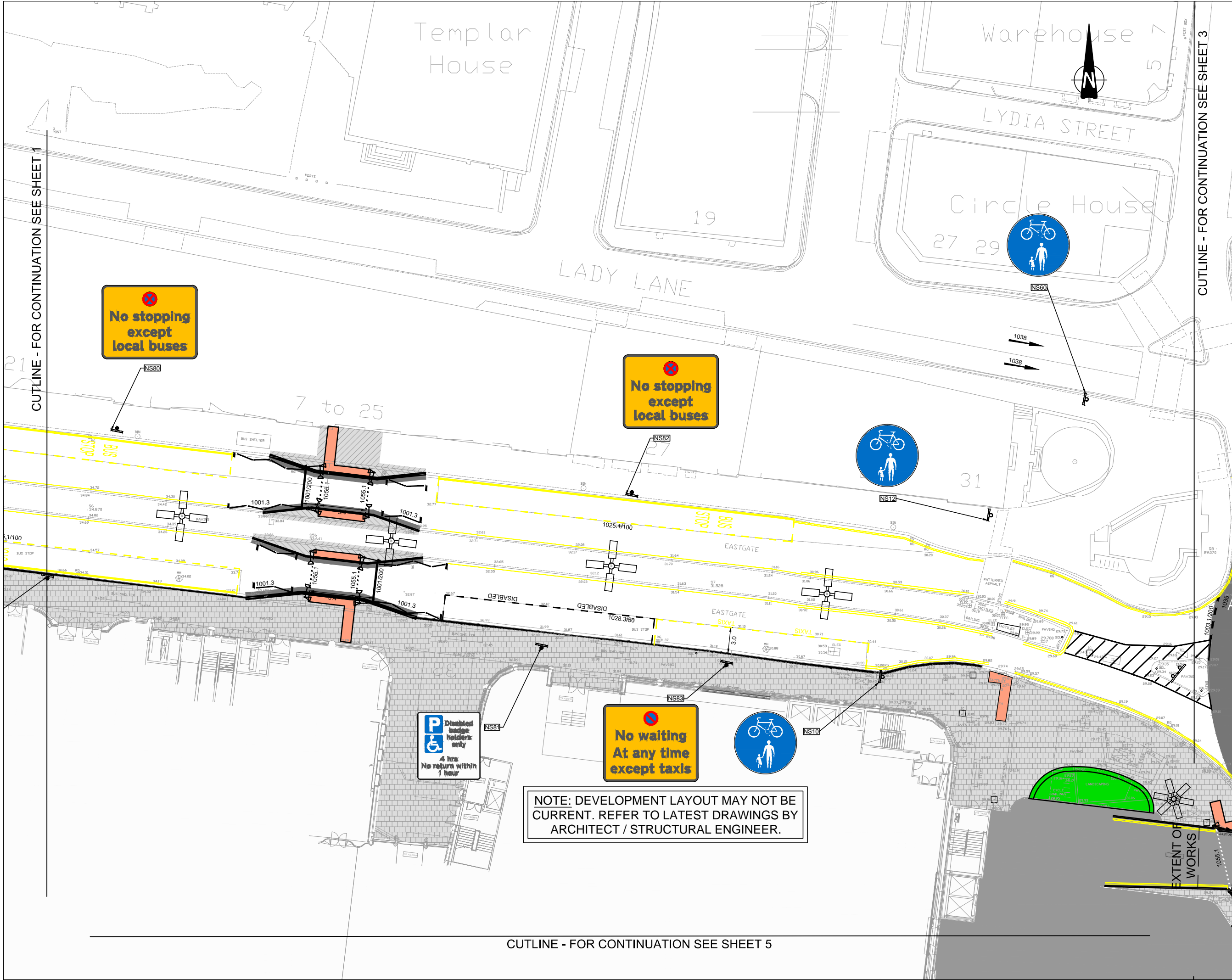


Pickfords Wharf Clink Street London SE1 9DG  
 t 020 7928 7888 f 020 7928 3033  
 mail@watermangroup.com www.watermangroup.com

FOR CONSTRUCTION

Designed by	SP/MC	Checked by	MC	Project No	34992
Drawn by	CM/SP	Date	FEB 14	Computer File No	34992SA75/2002.dwg

Publisher	Zone	Category	Number	Revision
C	SA	75	1200-2	E03



CUTLINE - FOR CONTINUATION SEE SHEET 1

CUTLINE - FOR CONTINUATION SEE SHEET 3

CUTLINE - FOR CONTINUATION SEE SHEET 5